

The Revivals: Greek, Gothic, Egyptian & The Domestic Revolution in Architectural and Landscape Design





Plan for Washington, DC
1790
Thomas Jefferson



Maison Carree
16 BCE
Nîmes, France



Virginia State Capitol
1785
Thomas Jefferson



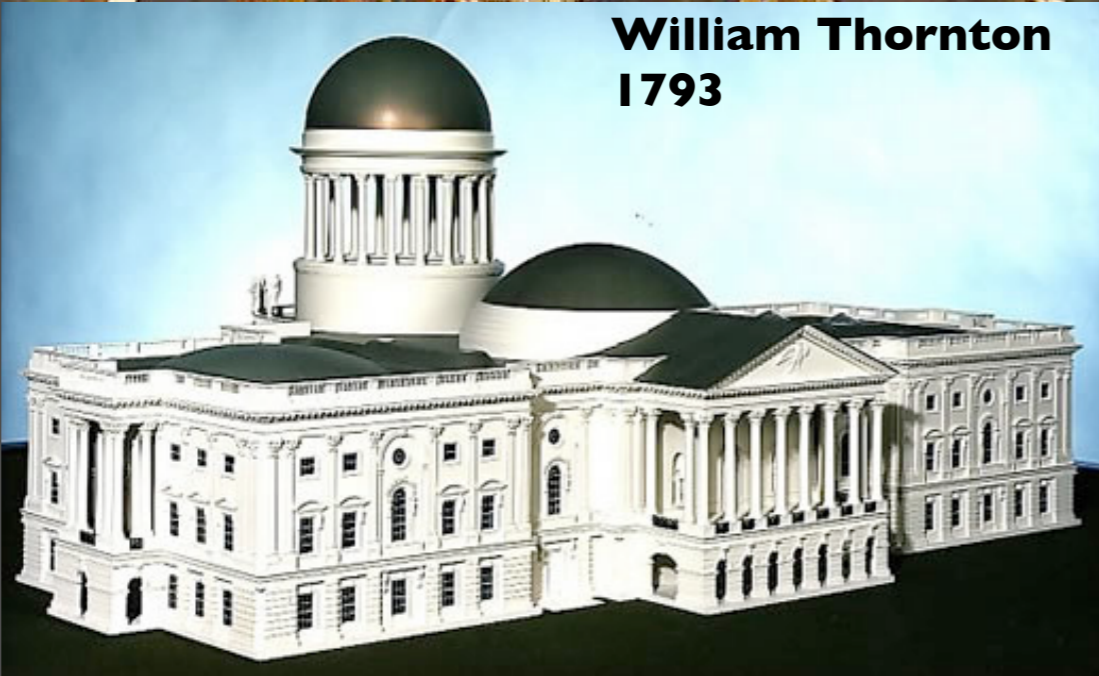
An Architecture for a New Nation



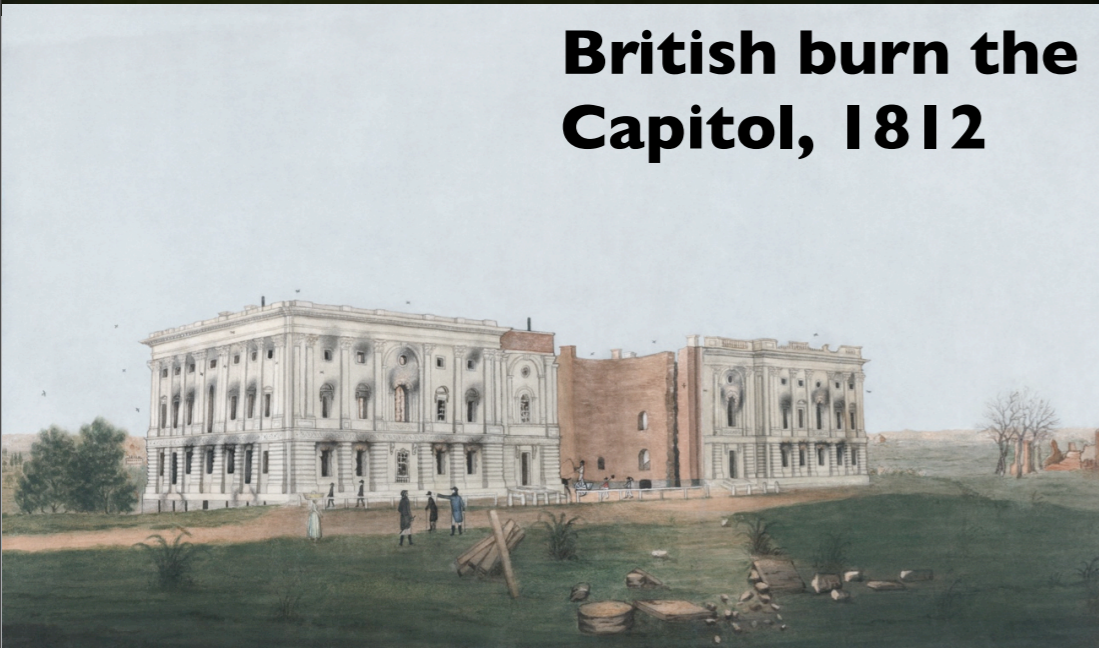
Tuesday, November 23, 2010



**William Thornton
1793**



**British burn the
Capitol, 1812**



**Henry Benjamin Latrobe
1806**



*Tobacco-leaf and tobacco-flower capital
by Latrobe in the Small Senate Rotunda.*

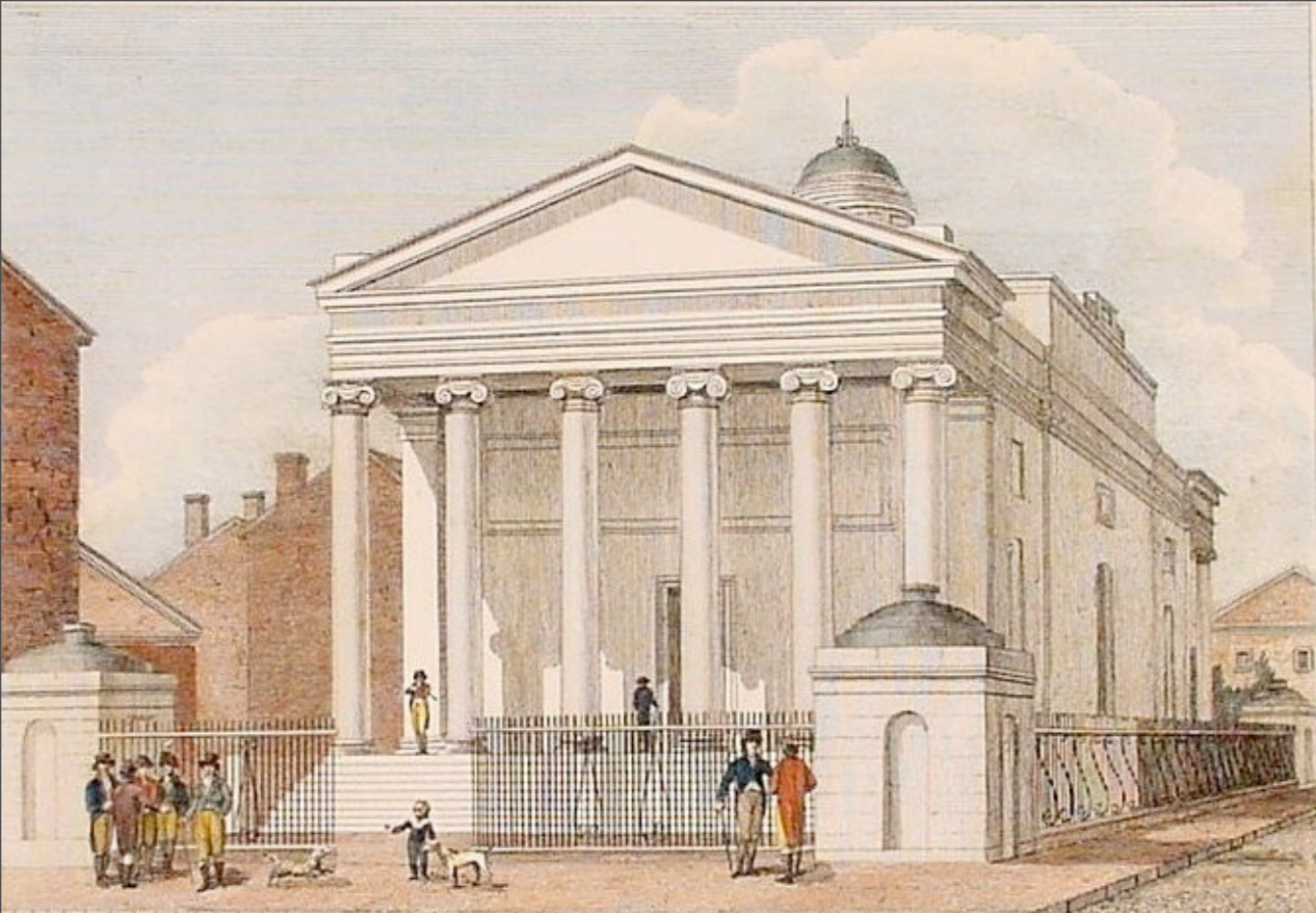


Latrobe's famous corncob capital. (Day)



**Baltimore Cathedral
1806-21
Baltimore, MD
Henry Benjamin Latrobe**





**Bank of Pennsylvania
Philadelphia
1798
Henry Benjamin Latrobe**



**Second Bank of the U.S.
Philadelphia
1818
William Strickland**

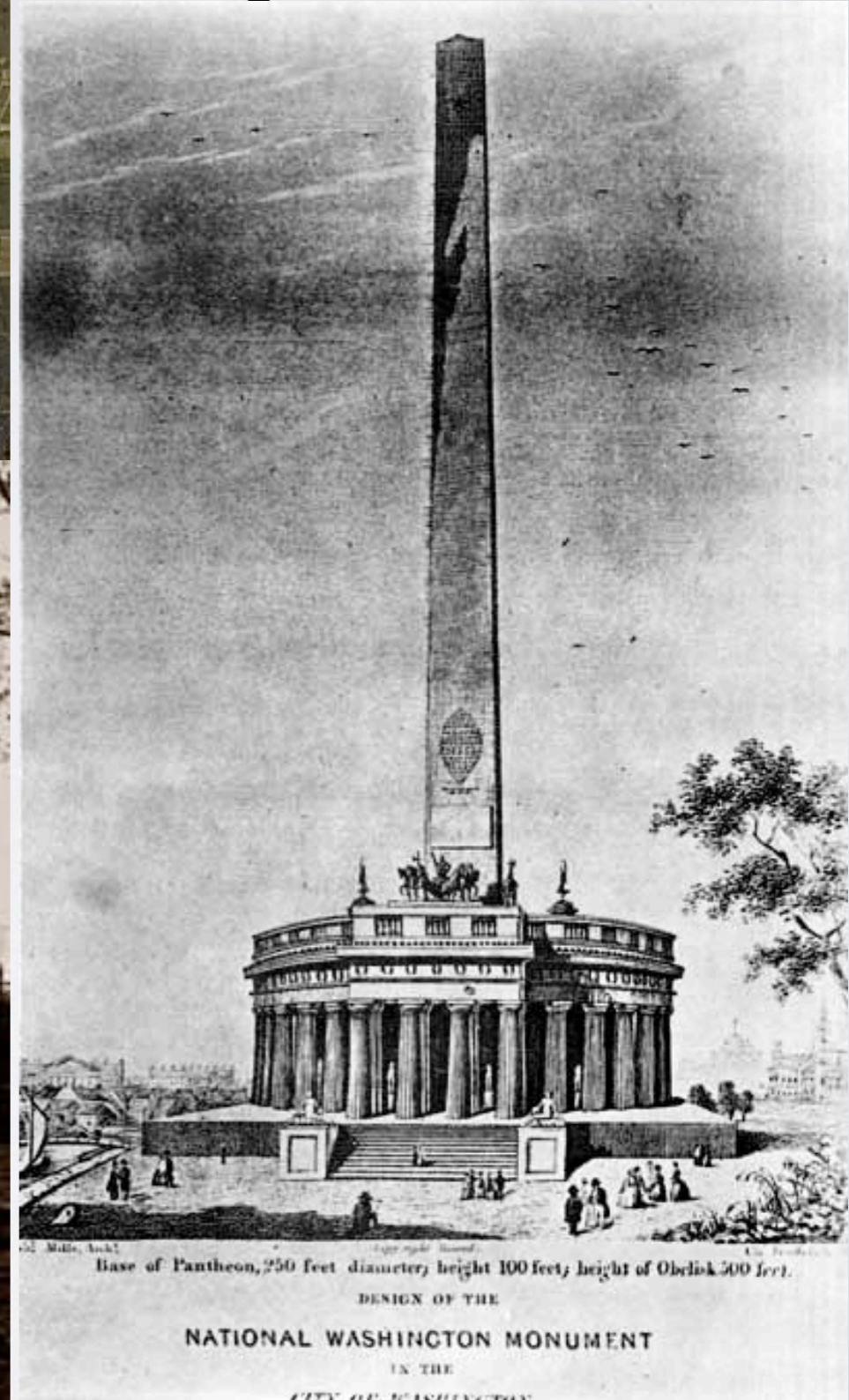


**U.S. Patent Office
Washington, DC
1836
Robert Mills**



**U.S. Treasury
Washington, DC
1838
Robert Mills**

Washington Monument, 1836





Andalusia, Philadelphia, 1836, Thomas U. Walter

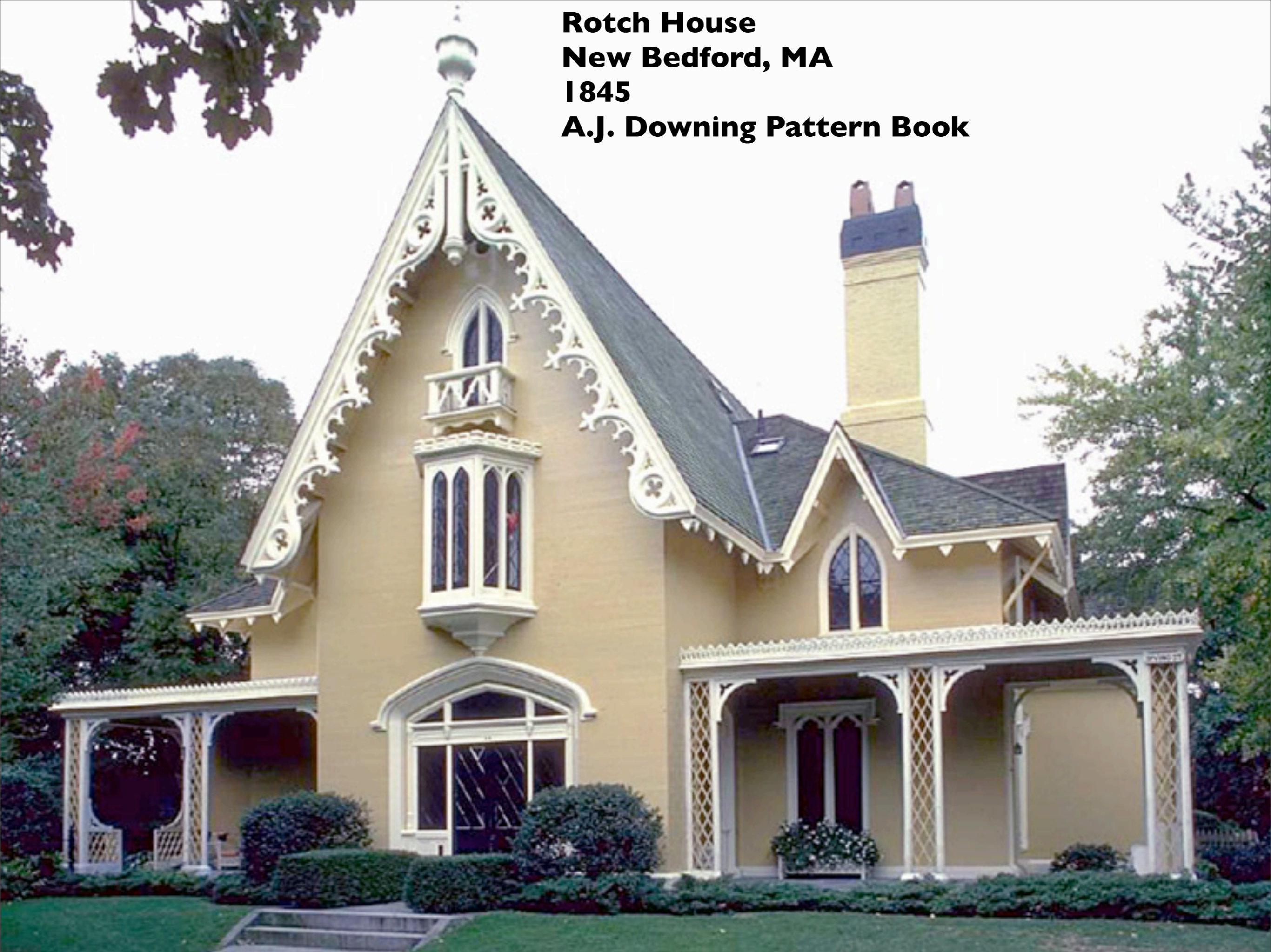


**First Baptist Church
Richmond, VA
1839
Thomas U. Walter**

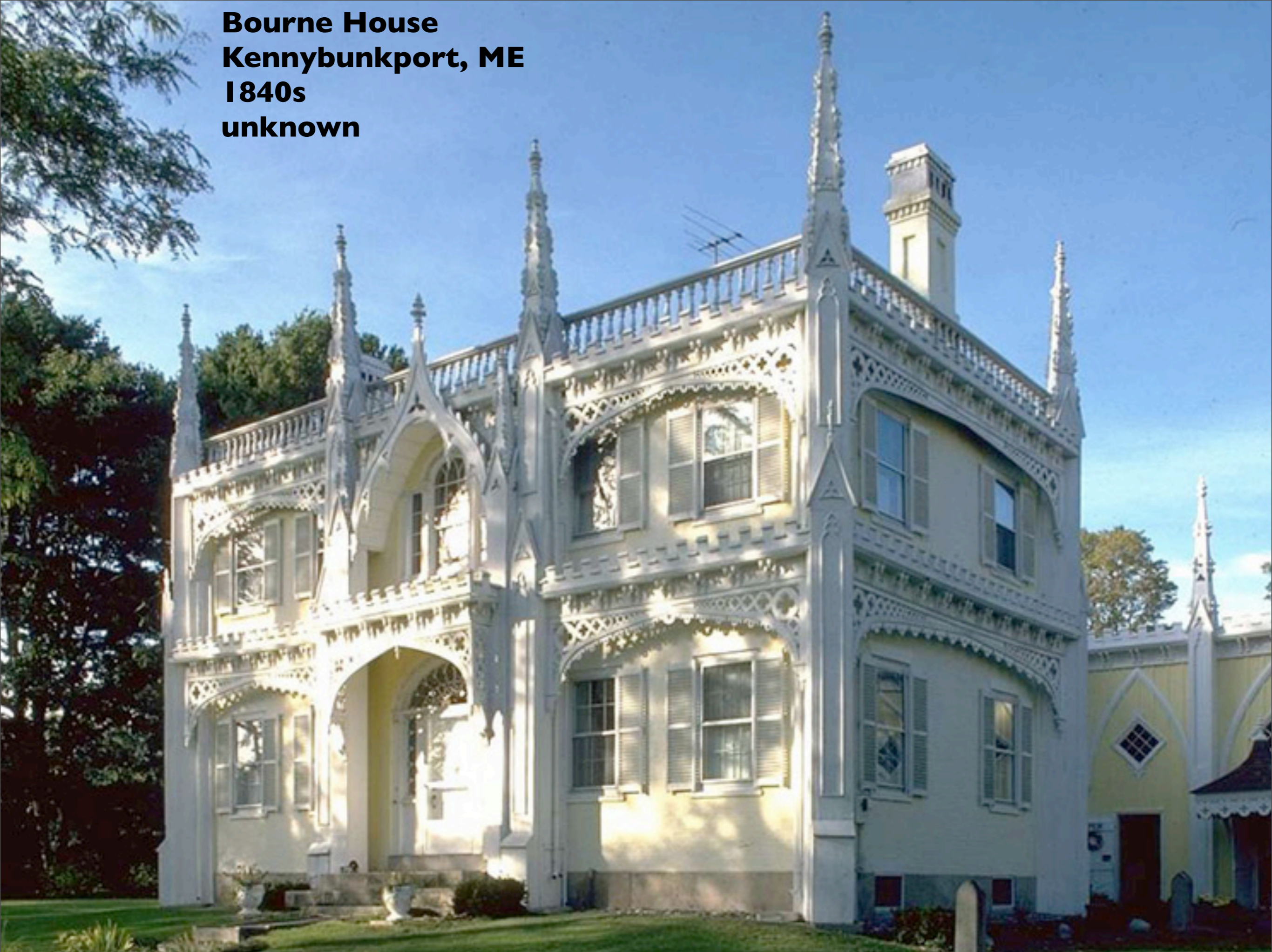


**Medical College of Virginia
Richmond
1845
Thomas W. Stewart**

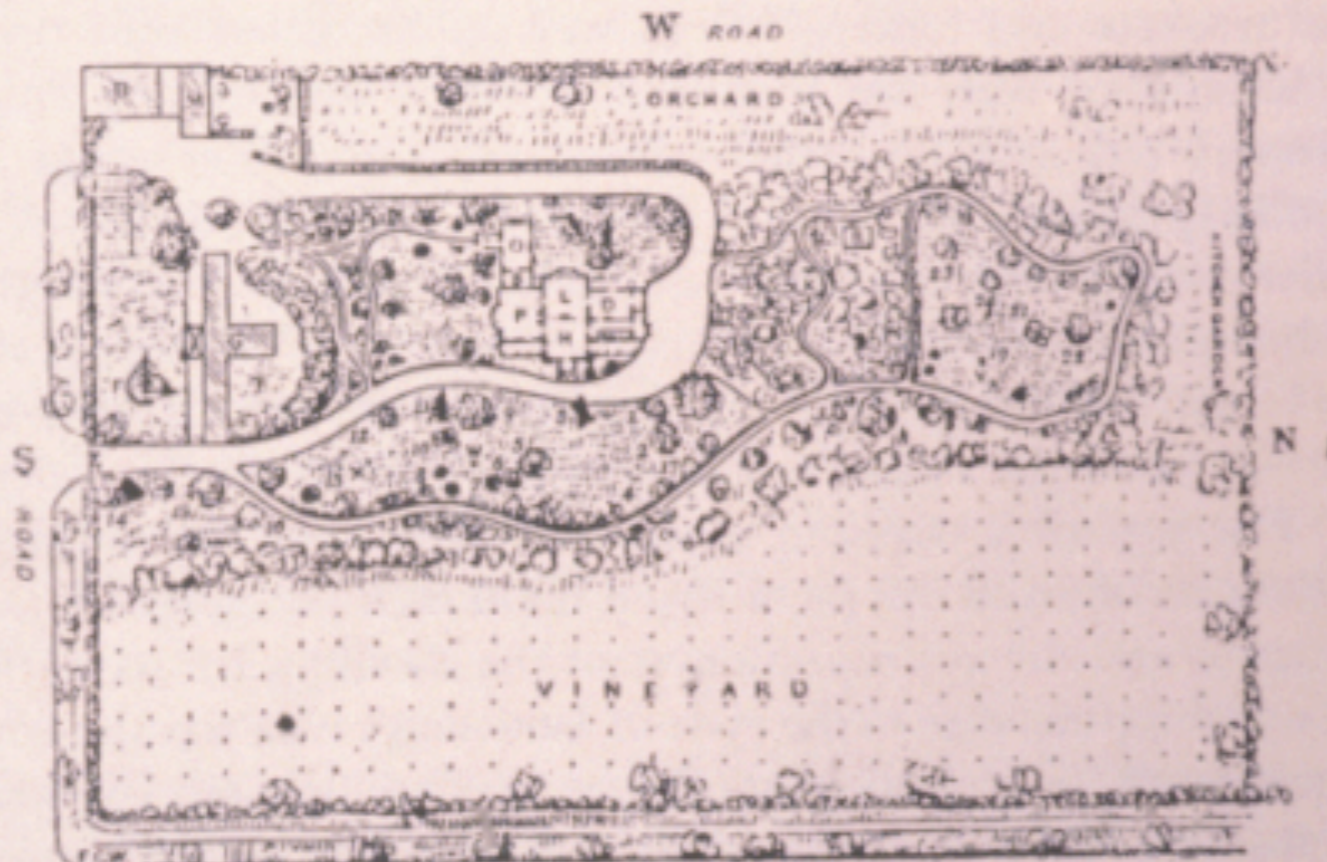
**Rotch House
New Bedford, MA
1845
A.J. Downing Pattern Book**



Bourne House
Kennybunkport, ME
1840s
unknown



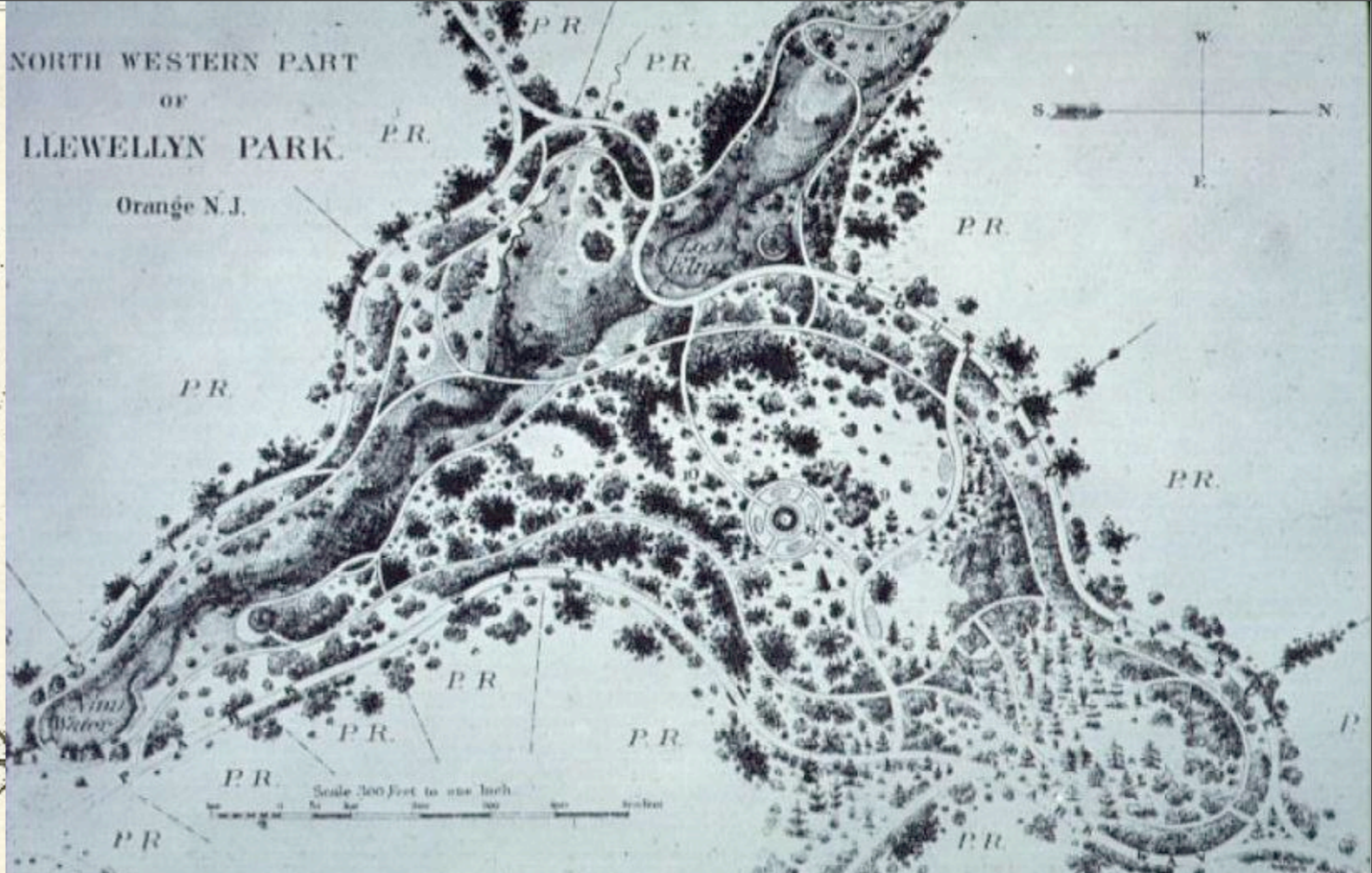
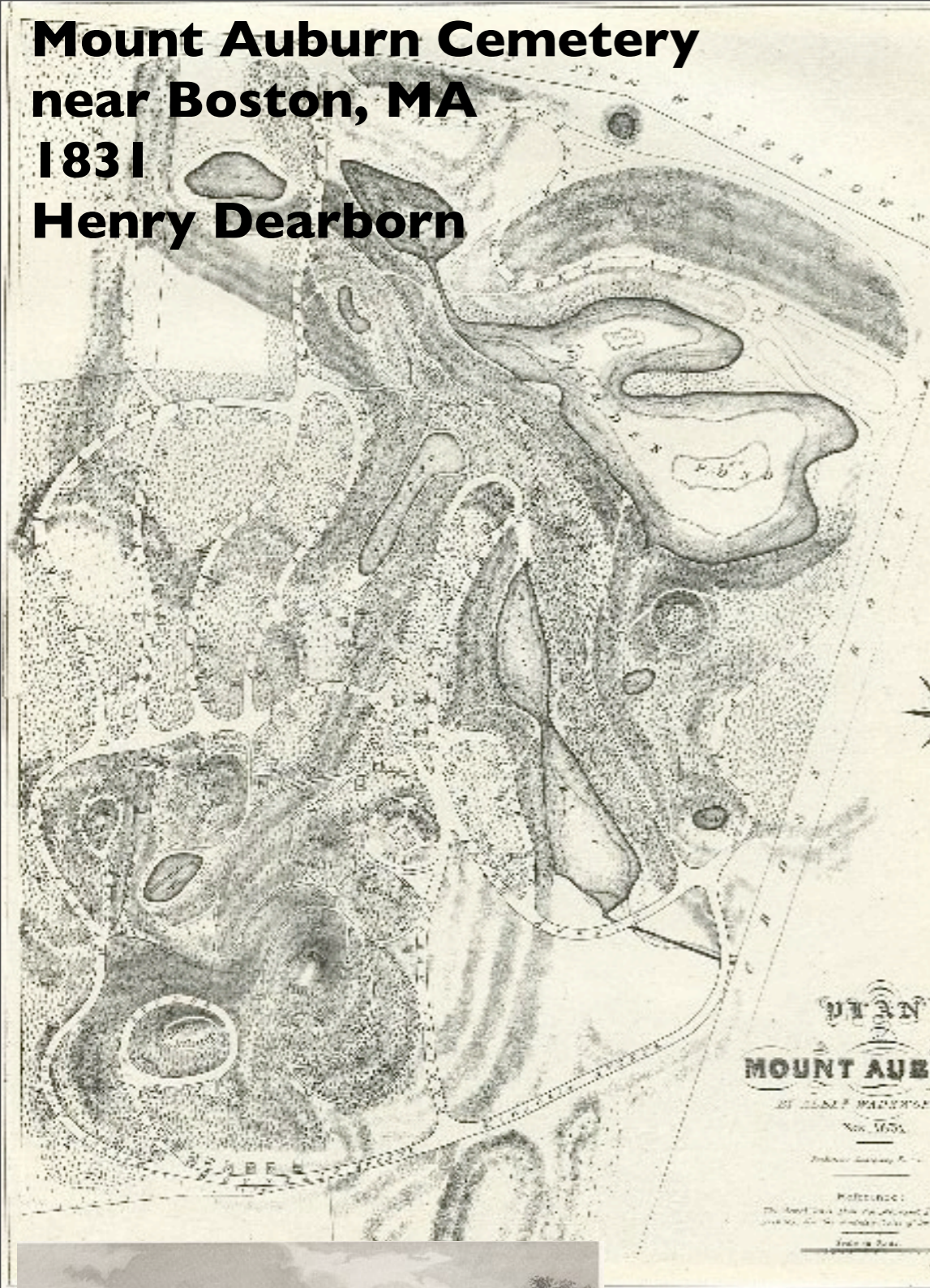
The Picturesque Downing example, 1838



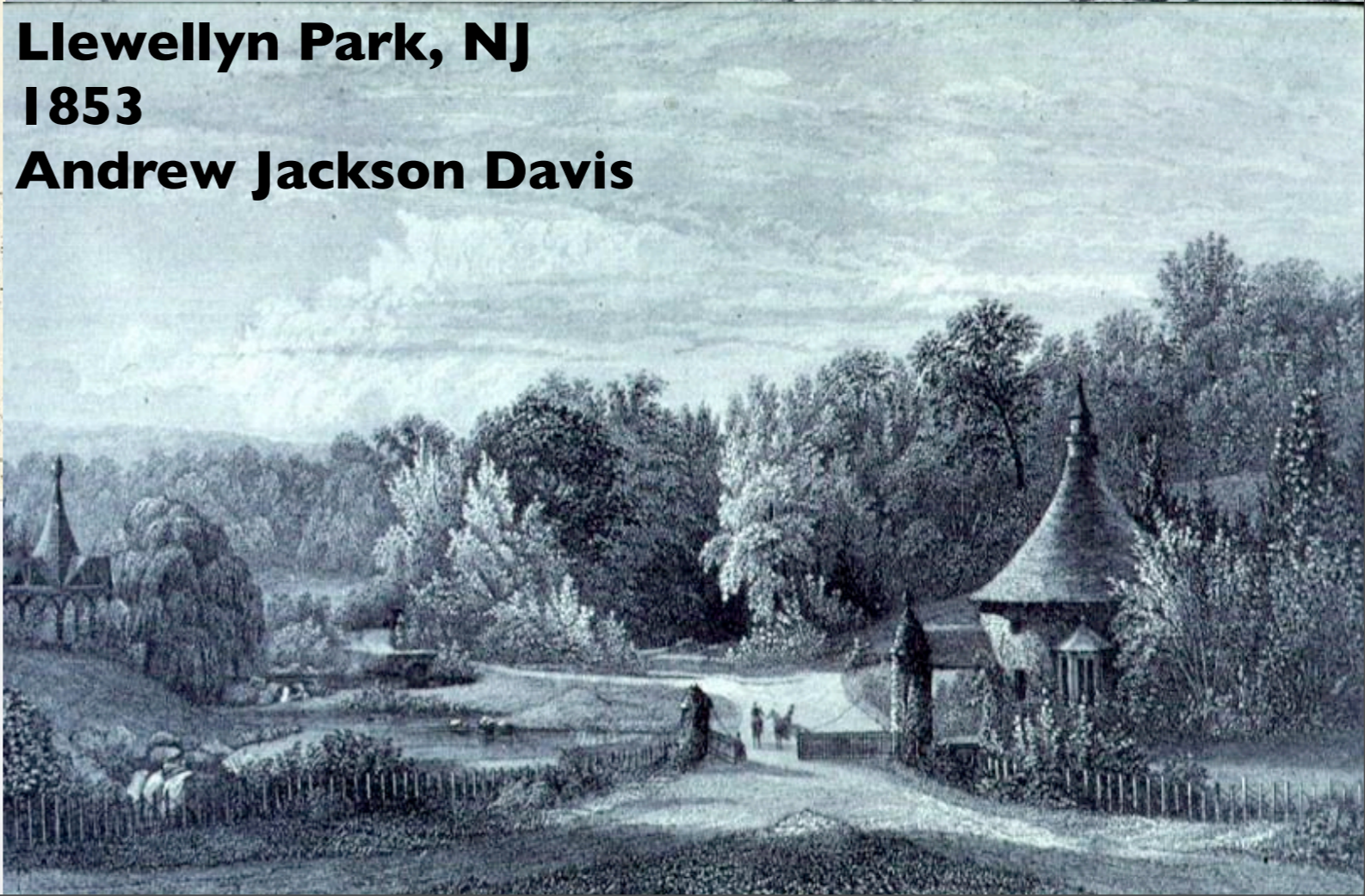


The Sublime
Snow Storm: Steamboat off a Harbour's Mouth
William Turner, 1842

Mount Auburn Cemetery
near Boston, MA
1831
Henry Dearborn



Llewellyn Park, NJ
1853
Andrew Jackson Davis





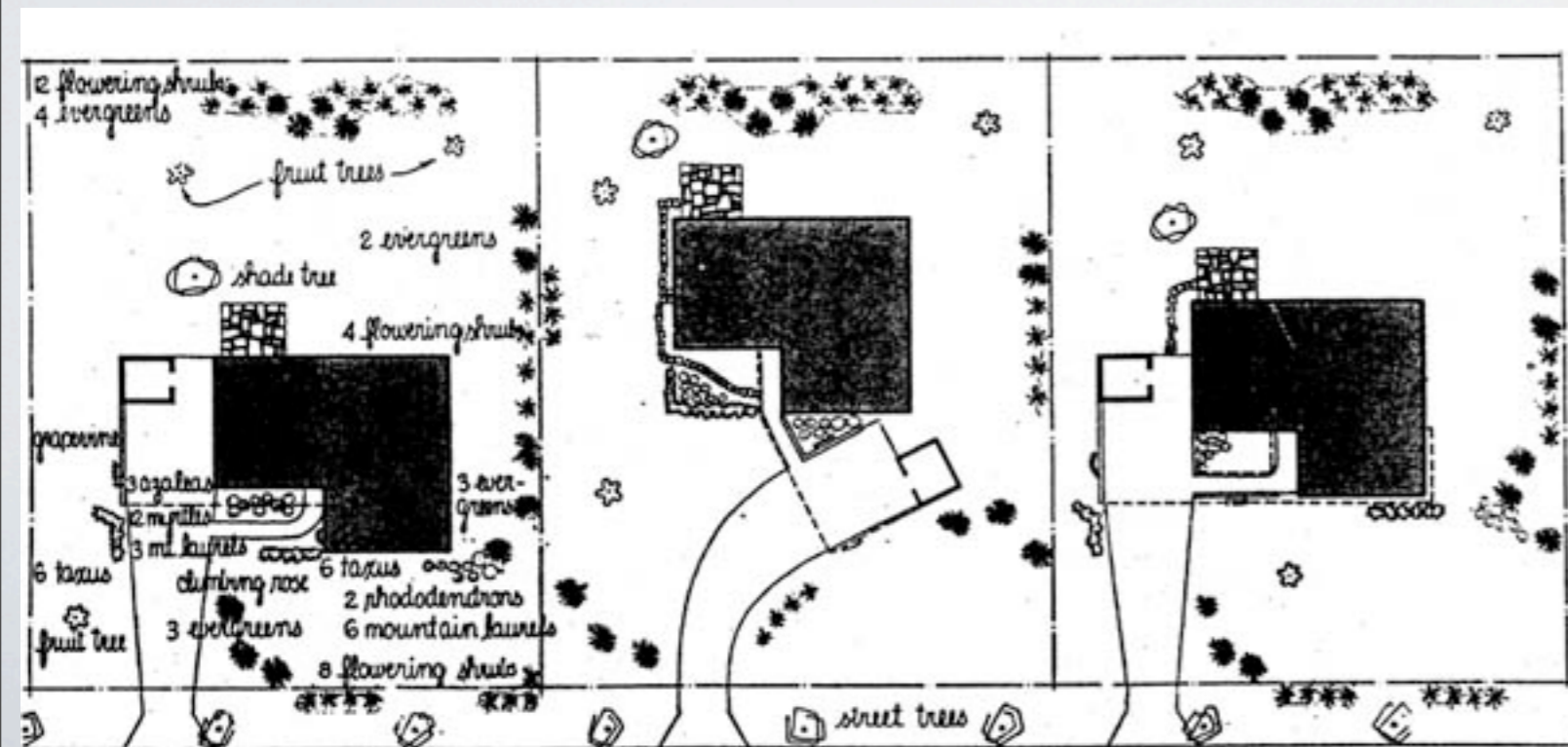
Levittown, NY
1947 - 51
Abraham Levitt & Sons
30 houses a day for a total of
4,000 by 1951





From Cemetery to Suburb:

Levittown, Pa, 1951



One of four different styles of the Jubilee



One of four different styles of the Colonial



Levittown IN 1957



One of five different styles of the Pennsylvania



One of four different styles of the Country Clubber

DALLAS!



Tuesday, November 23, 2010



THE
AMERICAN WOMAN'S HOME:

OR,
PRINCIPLES OF DOMESTIC SCIENCE;

BEING
A GUIDE TO THE FORMATION AND MAINTENANCE OF ECONOMICAL,
HEALTHFUL, BEAUTIFUL, AND CHRISTIAN HOMES.

BY
CATHARINE E. BEECHER
AND
HARRIET BEECHER STOWE.



NEW-YORK:

J. B. FORD AND COMPANY.

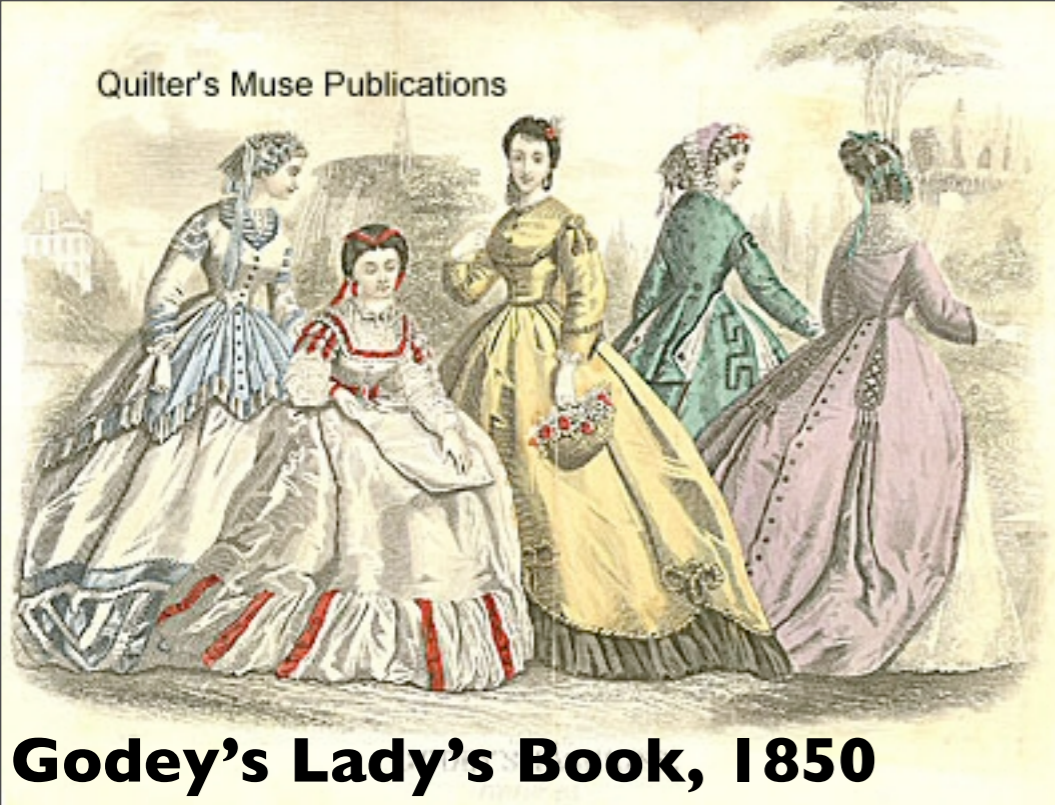
BOSTON: H. A. BROWN & CO. PHILADELPHIA: CHAS. S. GREENE & CO.
CHICAGO: J. A. STODDARD & CO. CINCINNATI: HENRY HOWE
SAN FRANCISCO: FRANCIS DEWING & CO.

1870

170
E. H. Brown
Copy 1



Women: guardians of both personal and civic virtue of the new Republic.



Godey's Lady's Book, 1850



Disney Corp. 2007

Compare: tilt of head; lack of direct eye contact; small waists. Although the Disney image is more sexualized, with jutting hips and large breasts. The Godey's ladies might be called "submissive," while the Disney princesses are "coy, alluring"

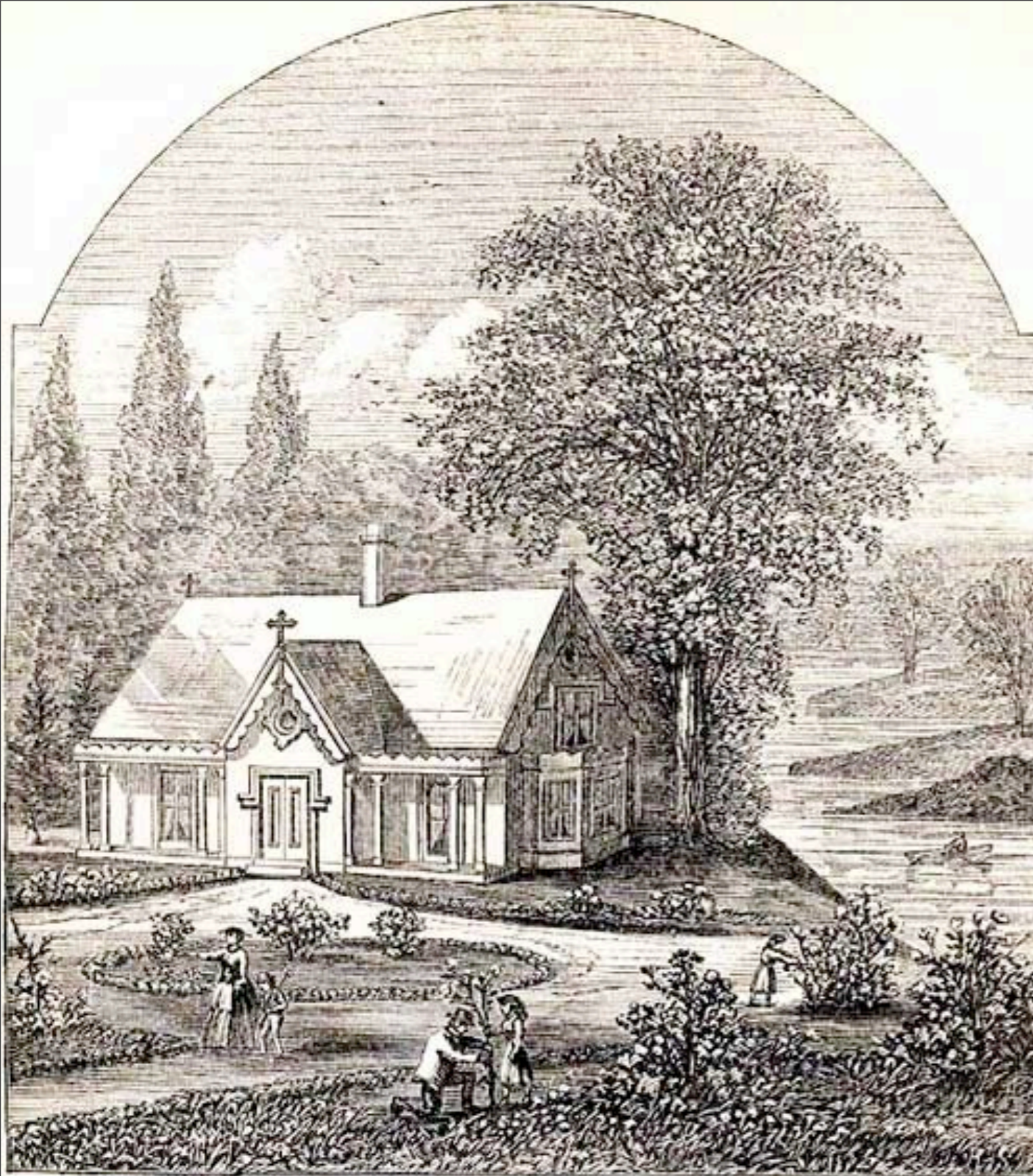
"Good Manners are the expressions of benevolence in personal intercourse. They are the exterior exhibition of the Divine precept, which requires us to do to others as we would that they should do to us... The forefathers of this nation gave up the comforts and refinements of a civilized country, and came to a heathen shore, encountering danger, privations, sickness, loneliness, and death; and all these, their religion taught them to meet with calmness, fortitude, and submission. And thus it became the custom and habit of the whole mass of people, to repress, rather than to encourage the expression of feeling."

from *The American Woman's Home*, 1869

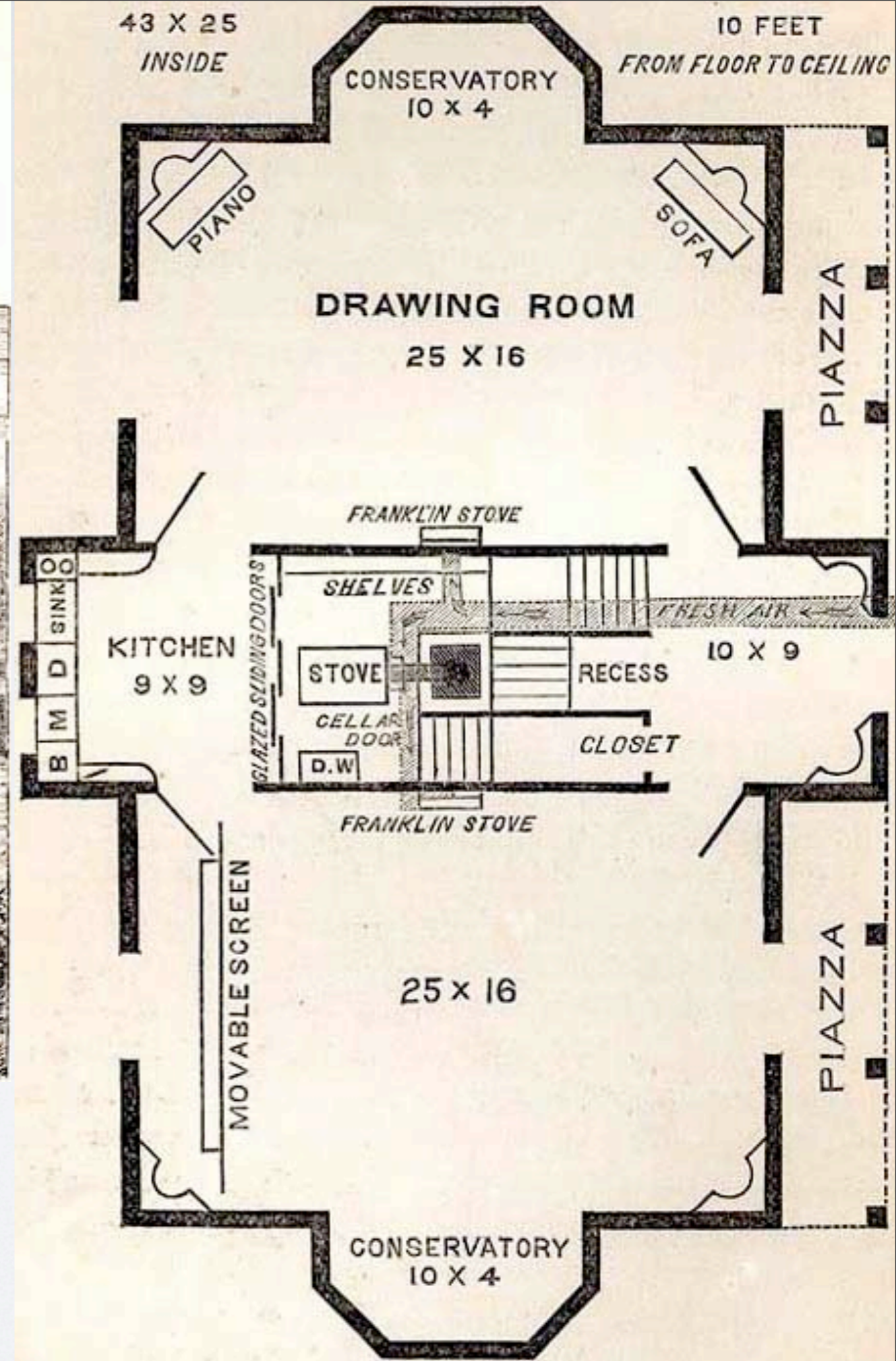
"No one knows more about good manners and considerate behavior than Snow White, Cinderella, Sleeping Beauty, Ariel, Belle, and Jasmine. With the delightful stories and helpful advice inside, little princesses will discover how much fun learning about manners can be."

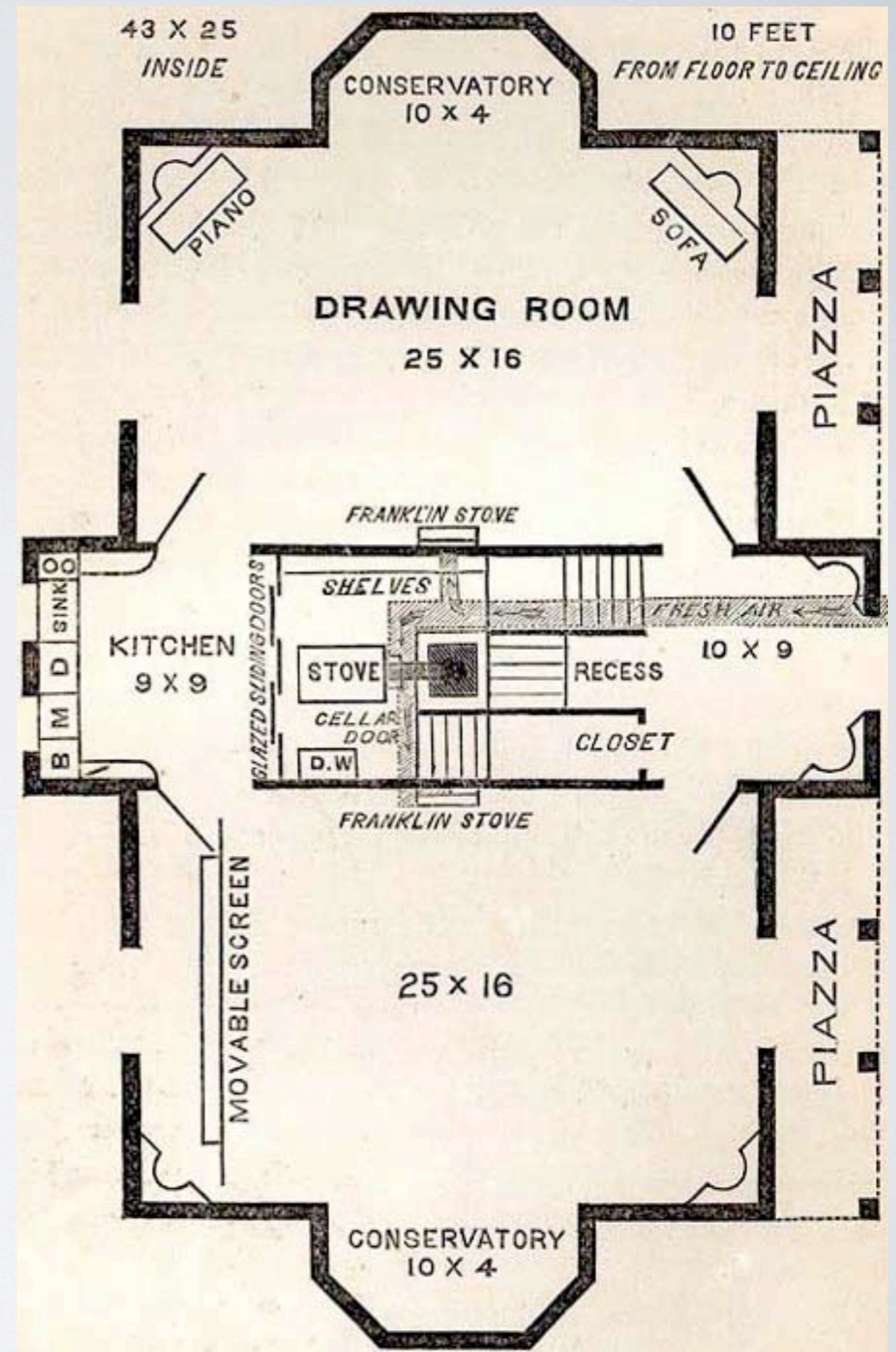
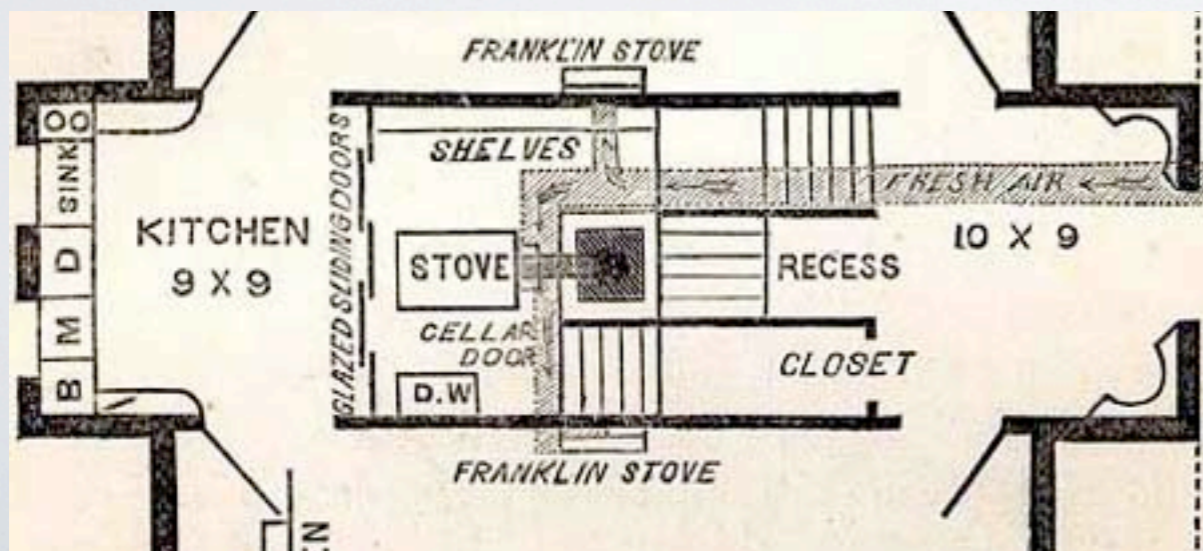
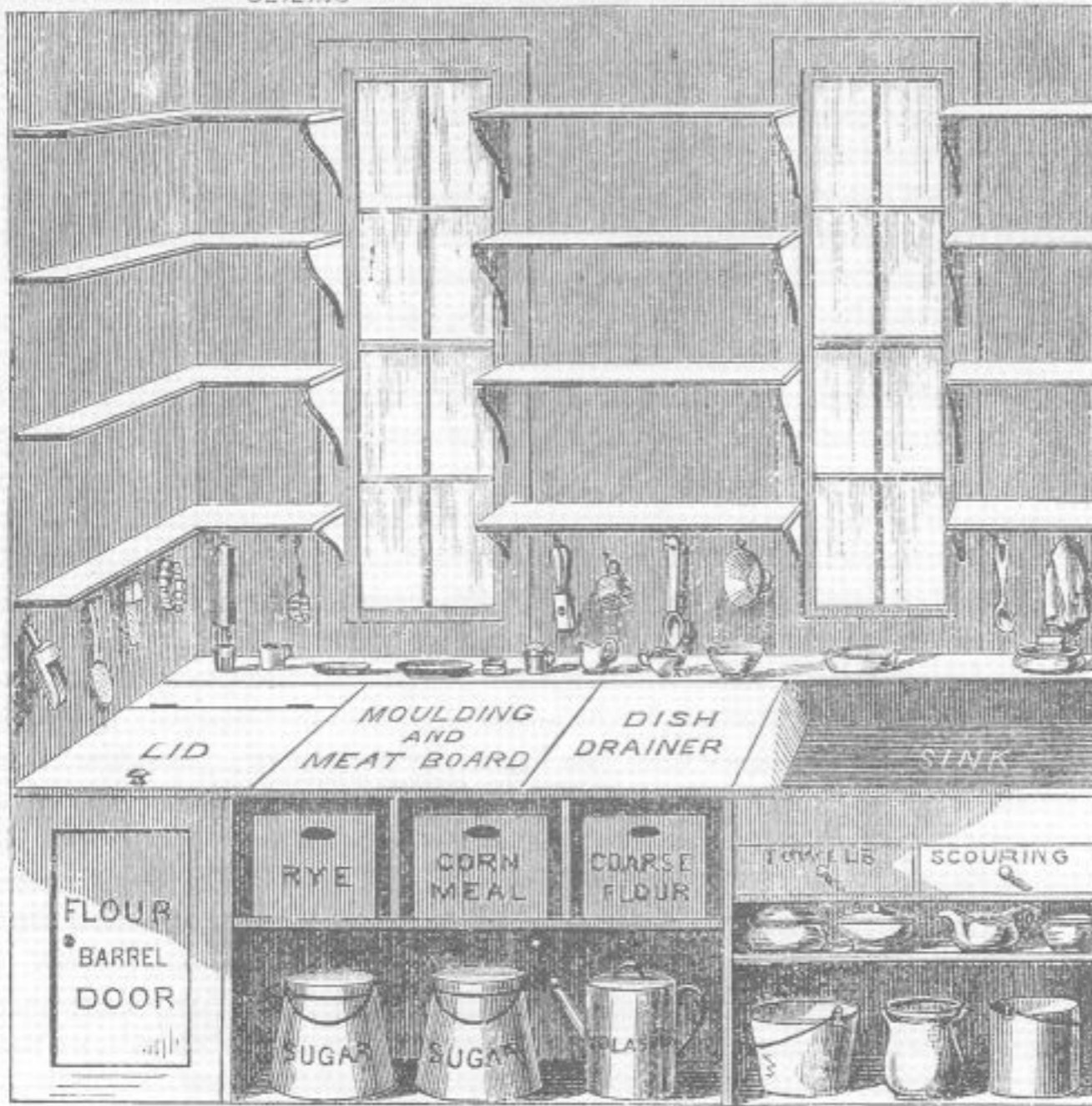
from *Disney Princess: A Book of Manners*, 2005





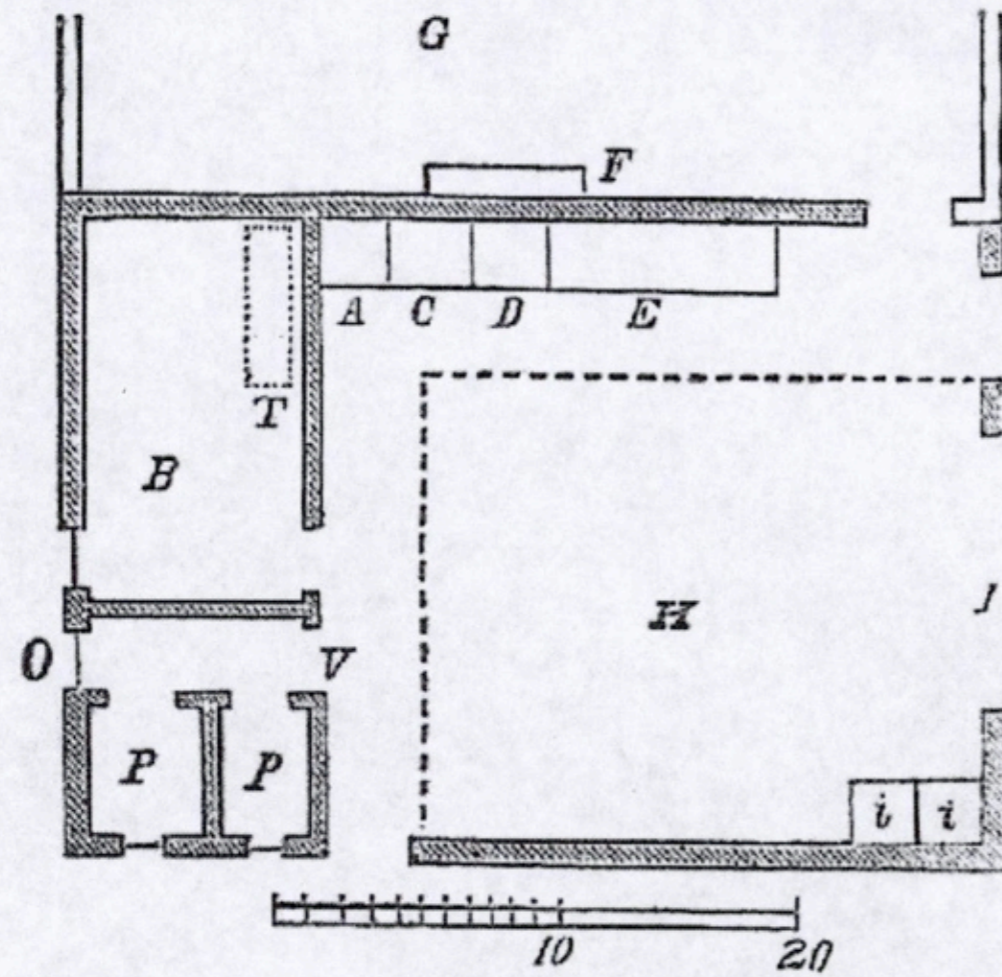
“A Christian Home” from *The American Woman’s Home: Or Principles of Domestic Science*, Catharine E. Beecher & Harriet Beecher Stowe, 1869





“Back Door Accommodations”
A Treatise on Domestic Economy,
for the Use of Young Ladies At Home and At School, 1845,
 Catherine Beecher

Fig. 35.



Scale of Feet.

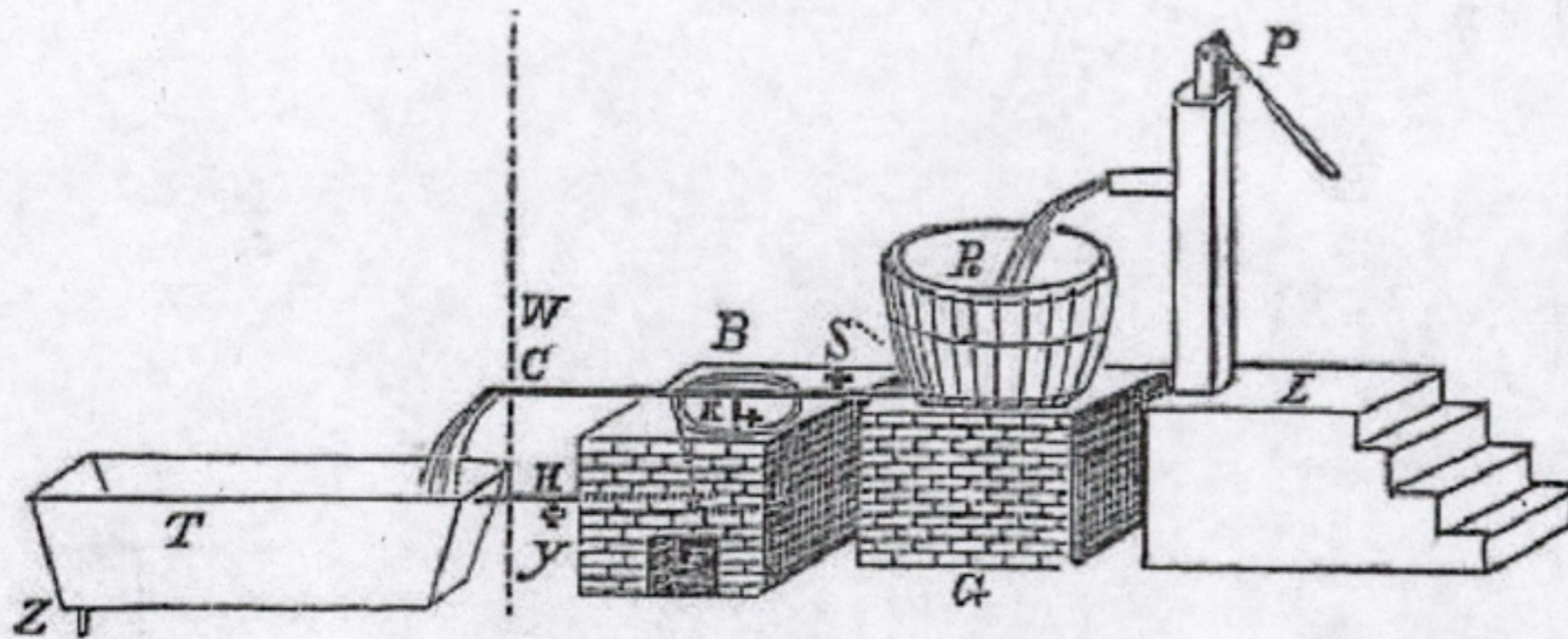
A, Boiler and furnace.
 B, Bathing-room.
 C, Reservoir.
 D, Pump.
 E, Wash-form.

F, Sink.
 G, Kitchen.
 H, Woodpile.
 I, Large doors.
 i, Coal & ash bins.

O, Window.
 P, Privies.
 T, Bathing-tub.
 V, Door.

“Accommodations for Securing Water with the Least Labor”
A Treatise on Domestic Economy,
for the Use of Young Ladies At Home and At School, 1845,
 Catherine Beecher

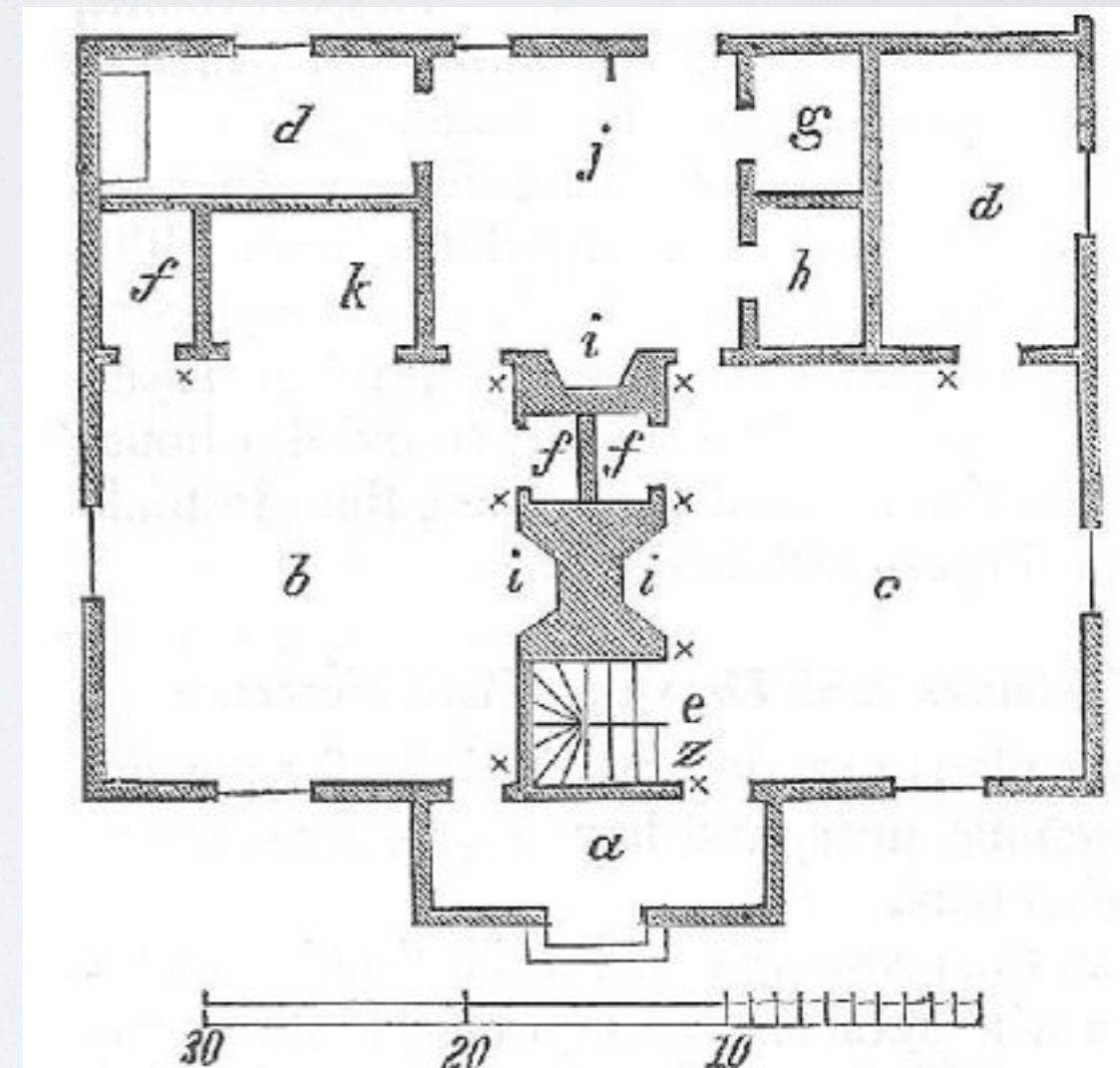
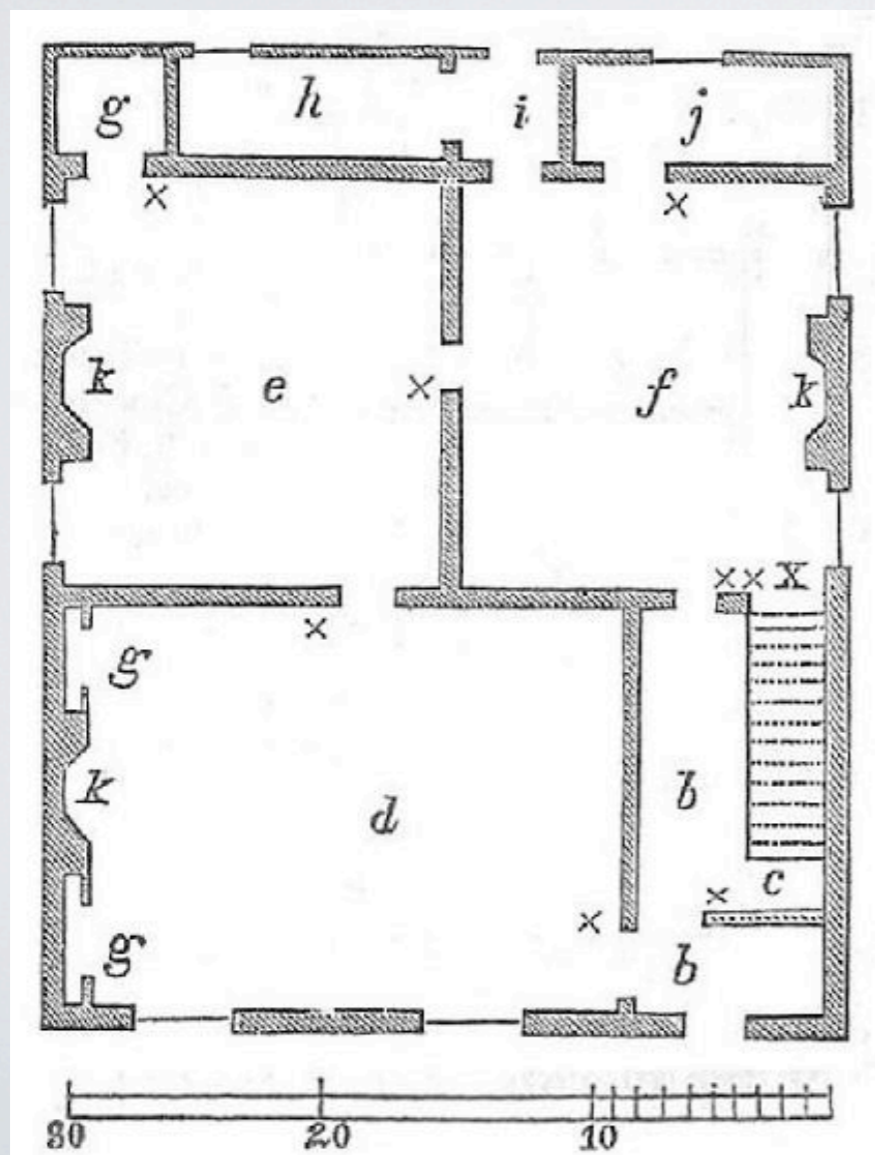
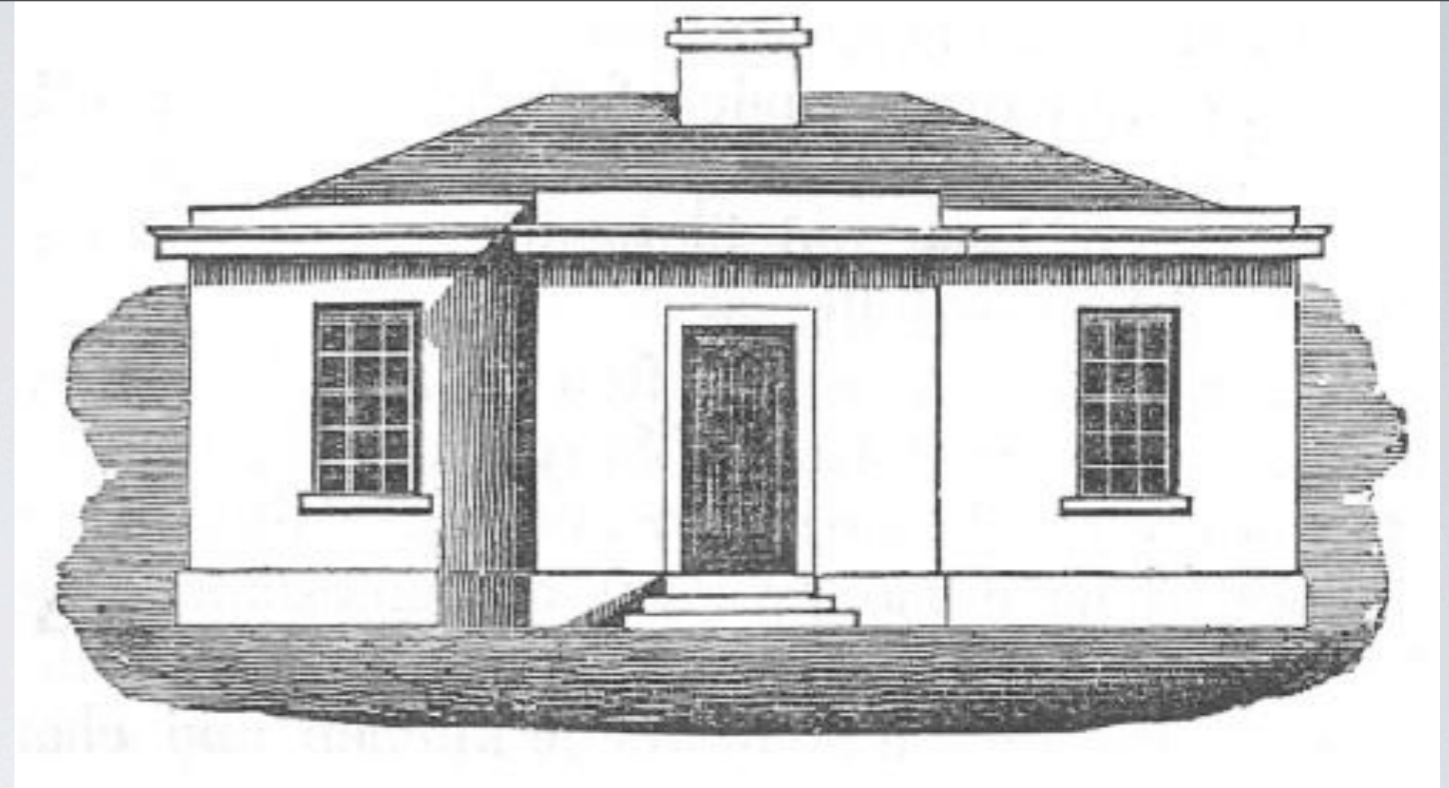
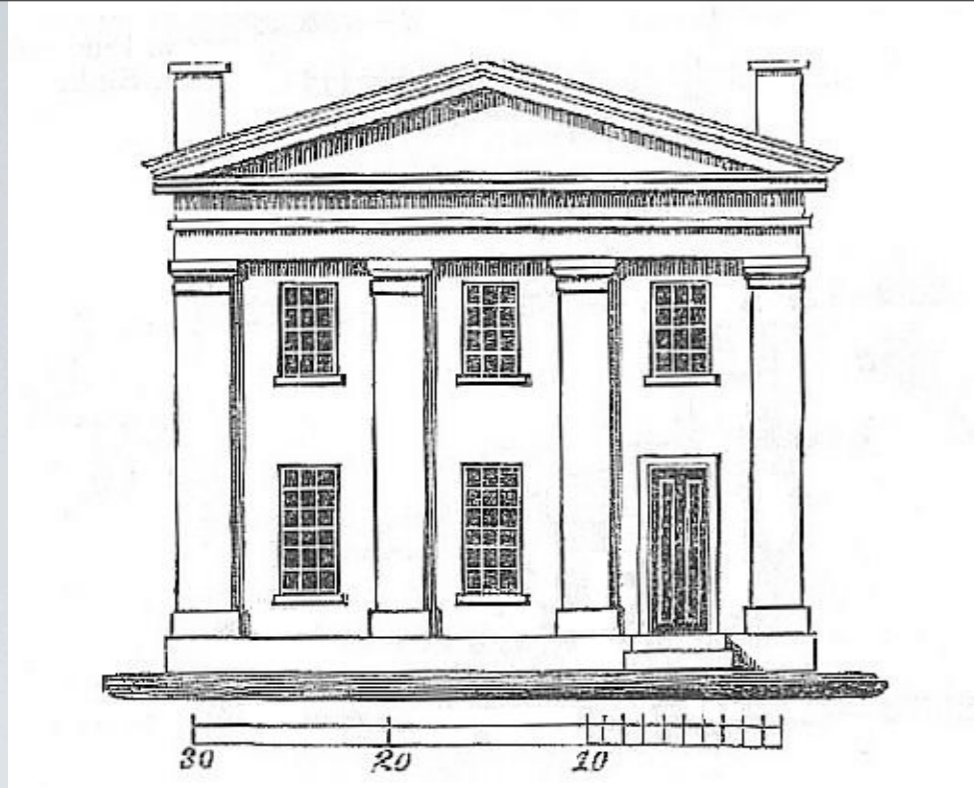
Fig. 34

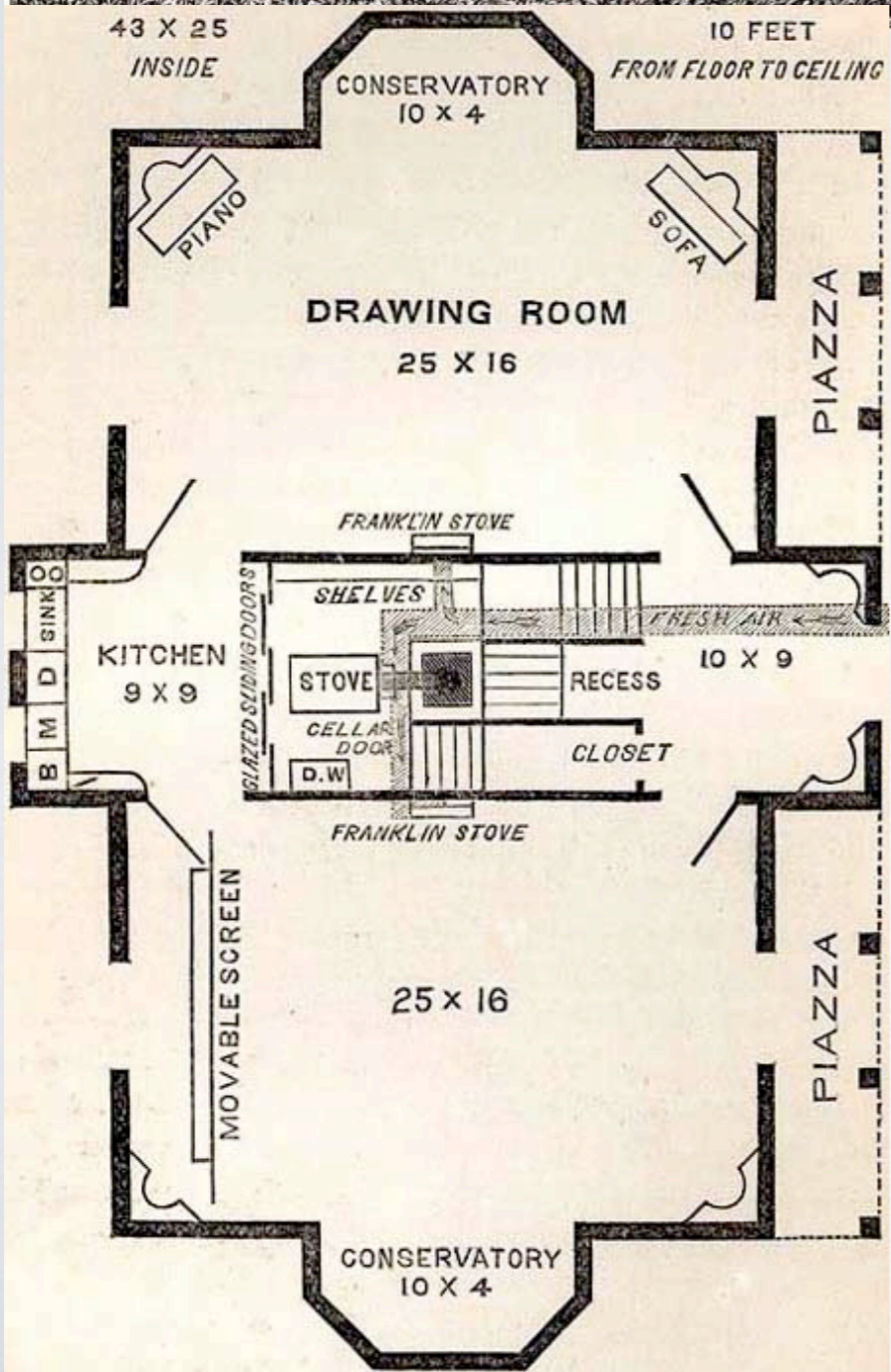
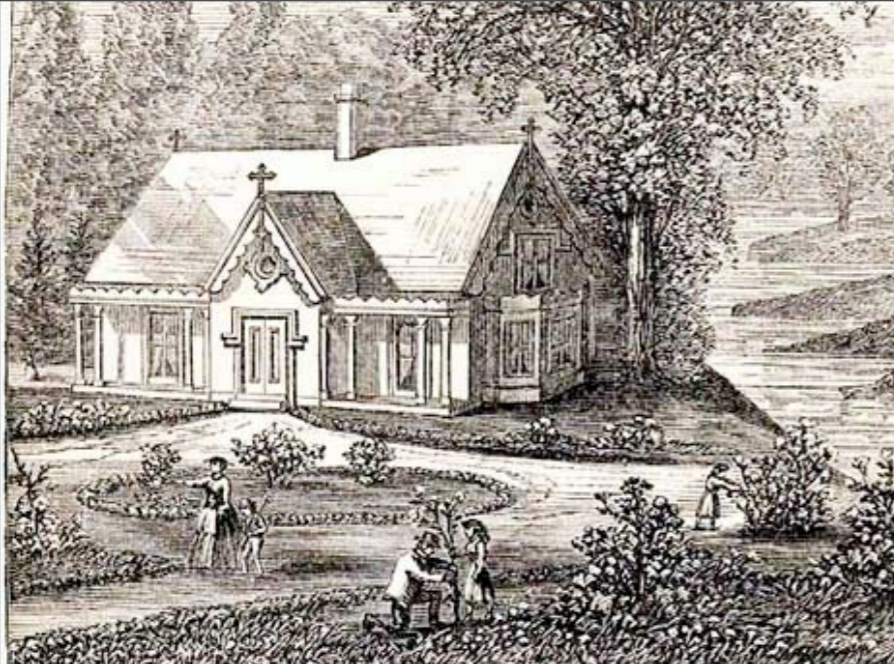


P, Pump.
L, Steps to use when pumping.
R, Reservoir.
G, Brickwork to raise the Reservoir.
B, Large Boiler.
F, Furnace, beneath the Boiler.
C, Conducts cold water,

H, Conducts hot water.
K, Cock for letting cold water into the Boiler.
S, Pipe to conduct cold water to a cock over the kitchen sink.
T, Bathing-tub, receives cold water from **C**, and hot water from **H**.

W, Partition separating the Bathing-room from the Wash-room.
Y, Cock to draw off hot water.
Z, Plug to let off the water from the Bathing-tub into a drain.



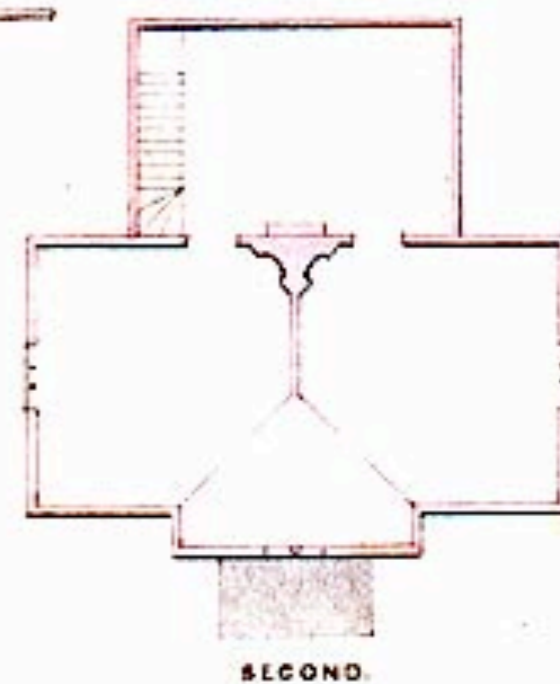


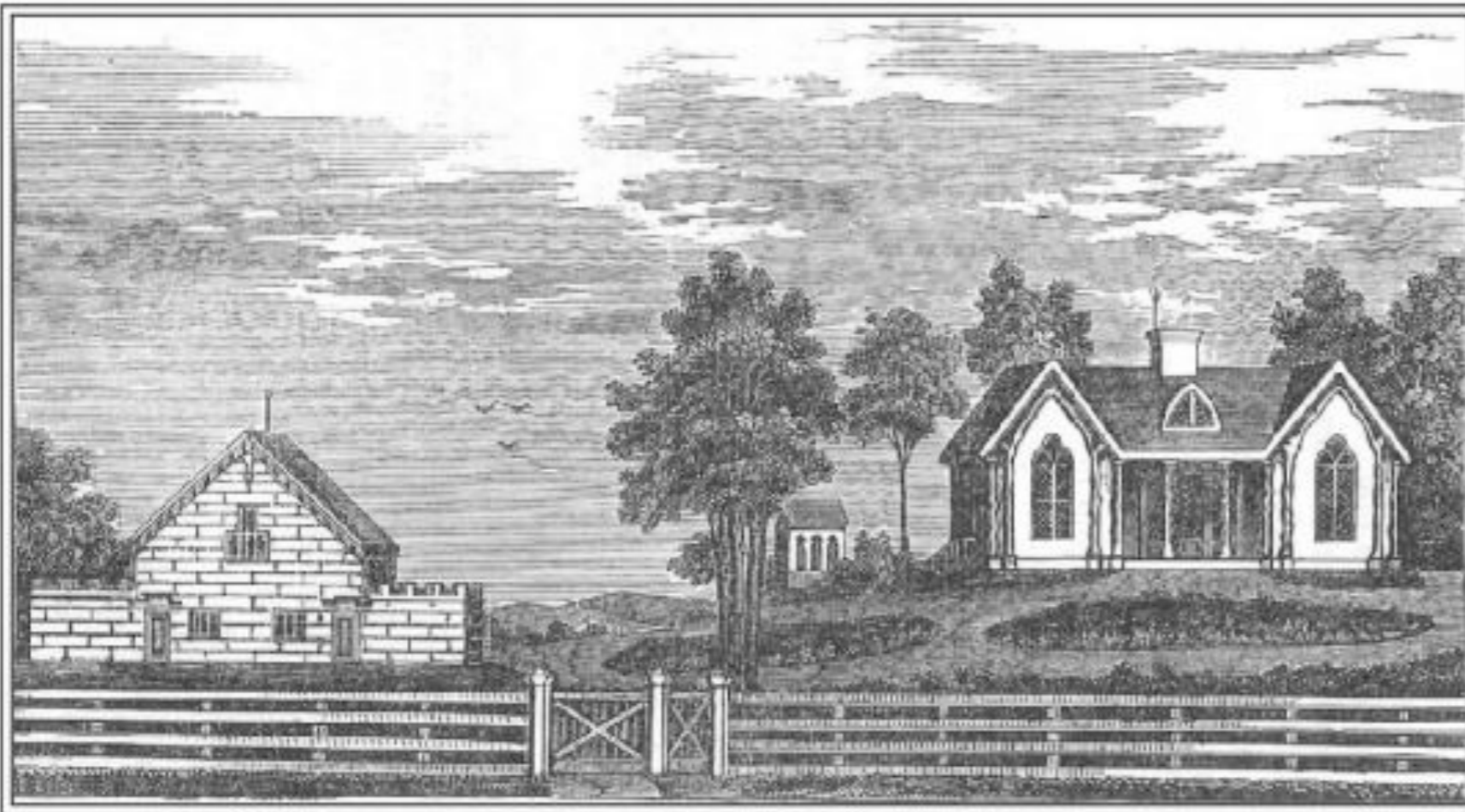
A. J. DAVIS ARCHT.

ENLARGED BY LITH. MERRILL & CO.

48 5100 DE 1

GATE-HOUSE IN THE RUSTIC COTTAGE STYLE.





**The Picturesque:
Expressions of Nature and
Virtue in the new Republic**

**Suburbs:
Flight from the vice of the
commercial city . . . ?**

